

# Keyboard Launchpad

## Media Guide

### Specifications

**Program Name:** Keyboard Launchpad

**Version:** 1.0

**Developer:** Stardock Corp. ([www.stardock.com](http://www.stardock.com)).

**Platform:** Windows 98, ME, 2000, XP

**Price:** \$9.95 stand alone, \$49.95 as part of Object Desktop ([www.objectdesktop.com](http://www.objectdesktop.com)).

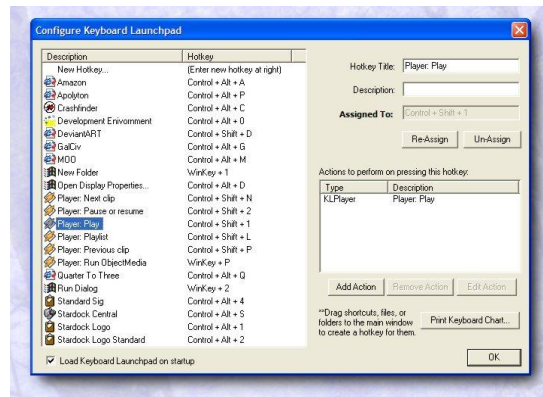
**Contact:** Brad Wardell ([bwardell@stardock.com](mailto:bwardell@stardock.com)).

**Phone:** 888-STARDOCK

### Executive Summary

Keyboard Launchpad (KLP) is a program that allows you to quickly and easily assign hotkeys to launch programs, visit URLs, paste saved clipboards (images or text), control individual programs, perform system commands, and more.

What makes KLP special is that it works system-wide. No matter what program you're in, no matter what you're doing, you can always access the hotkeys of KLP. It also has an open plugin format so that if there is a specialized program you wish to add your own hotkey support to, you can do so.



## In Action

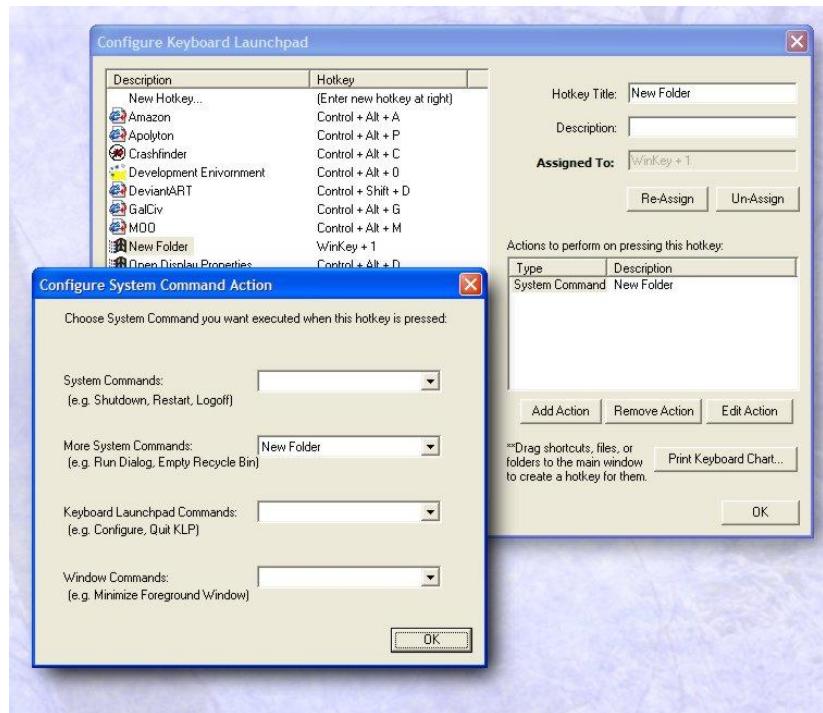


Figure 1 Keyboard Launchpad can assign hotkeys to a wide variety of system commands.

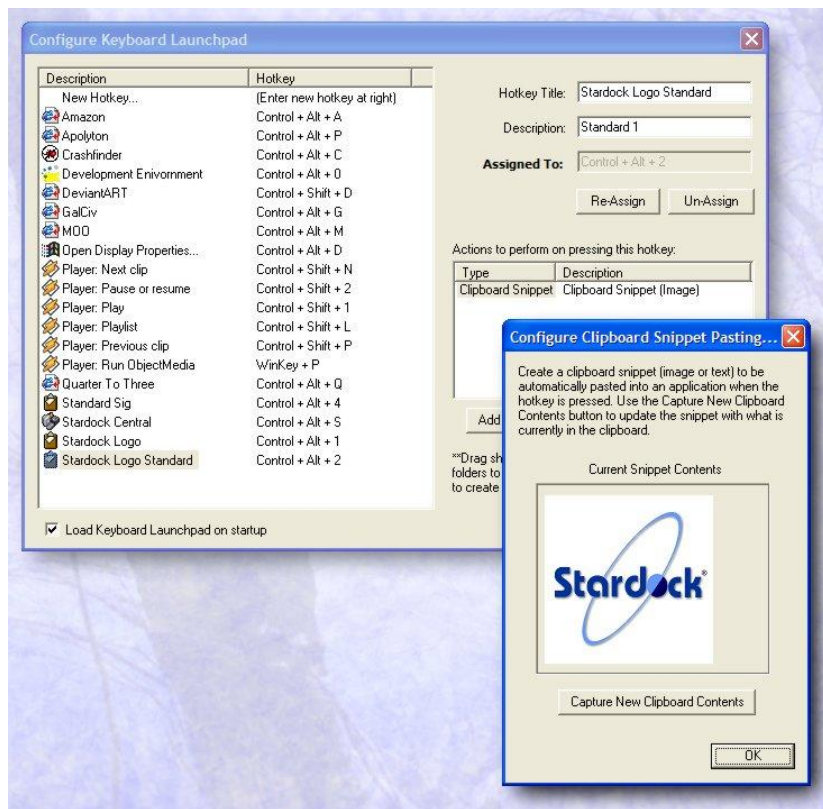


Figure 2 Users can copy images or text into the clipboard and then assign that clipboard to a hotkey. From then on, that saved clipboard will be pasted when the hotkey is used.

## FAQ

### ***Q: What makes The Keyboard Launchpad unique?***

A: The Keyboard Launchpad combines the ability to assign programs and websites to hotkeys that can be activated globally with the ability to also assign hotkeys to system commands, saved clipboards, along with the ability for customers to extend its functionality with plugins that allow users to assign hotkeys to control aspects of specific programs. KLP can also chain multiple events to a single hotkey.

### ***Q: Windows has the option of assigning keyboard short-cuts to launch programs. How is this different?***

A: The Keyboard Launchpad is able to make use of hotkeys system wide. No matter what program is running, no matter which program is currently in focus, a hotkey assigned by the Keyboard Launchpad will work. Plus, program short-cuts are only one small aspect of what KLP can do.

### ***Q: What are some potential uses for The Keyboard Launchpad?***

A: Stardock already uses it in its own technical support for canned replies. Customers also use it for fast pasting of company logos, signatures, passwords, etc. It is also a useful tool for administrators for being able to bring up a hidden admin program for use in kiosks and corporate desktops. In addition, many companies have custom programs in which their users' productivity could be improved by being able to retroactively have keyboard shortcuts for common tasks in those programs. KLP can do that. For web administrators, KLP is useful for quickly navigating through admin pages and other commonly visited websites since specific URLs can be assigned to a hotkey.